



4th Fl. Area Schedule (Rentable)

Number	Name	Area	Comments	Level
401	1+D-C	804 SF	Suite	Level 4
402	1-V	426 SF	Suite	Level 4
403	1-C	450 SF	Suite	Level 4
404	1-C	450 SF	Suite	Level 4
405	1-V	426 SF	Suite	Level 4
406	2+D-A	876 SF	Suite	Level 4
407	2+D-A	876 SF	Suite	Level 4
408	2+D-1	914 SF	Suite	Level 4
409	2+D-E	900 SF	Suite	Level 4
410	1-I	663 SF	Suite	Level 4
411	1+D-K	781 SF	Suite	Level 4
412	1+D-K	781 SF	Suite	Level 4
413	1+D-K	781 SF	Suite	Level 4
414	1+D-K	781 SF	Suite	Level 4
415	1+D-G	790 SF	Suite	Level 4
416	1+D-V	835 SF	Suite	Level 4
417	1+D-P	768 SF	Suite	Level 4
418	1+D-H	792 SF	Suite	Level 4
419	1+D-Q	689 SF	Suite	Level 4
420	1+D-J	778 SF	Suite	Level 4
421	1-E	628 SF	Suite	Level 4
422	2-M	755 SF	Suite	Level 4
423	2-L	785 SF	Suite	Level 4
424	2+D-F	907 SF	Suite	Level 4
425	1+D-D	722 SF	Suite	Level 4
426	1+D-D	722 SF	Suite	Level 4
427	1-D	453 SF	Suite	Level 4
428	1-G	678 SF	Suite	Level 4
Grand total:	28	20211 SF		

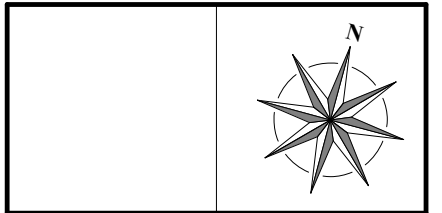
Gross Floor Area: 21,955 SF
Includes: Elevators / Stairs / Shaft.

We Merchandise Space Inc., and The Forrest Group are collectively referred to as the Designer.
 This drawing, as an instrument of service, is provided by and is the property of the Designer.
 The Contractor must verify and accept responsibility for all dimensions and conditions on site and must notify the Designer of any variations from the supplied information.
 This drawing is not to be scaled.
 The Designer is not responsible for the accuracy of survey, mechanical, electrical, etc., information shown on this drawing. Refer to the appropriate Consultant's drawings before proceeding with the work.
 Construction must conform to all applicable codes and requirements of authorities having jurisdiction.
 The Contractor working from drawings not specifically marked 'For Construction' must assume full responsibility and bear costs for any corrections or damages resulting from his work.
 The Designer retains ownership of copyright in all drawings. You are granted a license to construct, reproduce, distribute, exhibit or otherwise use, said materials, which licence may be revoked for cause, including but not limited to, misuse of drawings or failure to pay accounts.
 It is expressly understood and agreed that no action, lawsuit, or claim may be made against the employees, officers, or directors of We Merchandise Space Inc., and The Forrest Group for any reason whatsoever.
 For greater clarity the Designer shall not be liable, directly or indirectly, in any manner whatsoever by any party by reason of the use of the drawings and materials referred to Herein.

ISSUES		
NO.	DATE	DESCRIPTION
1	07/25/2013	ZONING APPLICATION
2	02/02/2016	AMENDED ISSUE FOR ZONING
NO. DATE DESCRIPTION		

REVISIONS		
NO.	DATE	DESCRIPTION

FORREST GROUP
 ASSERTIVELY GREEN
 We Merchandise Space Inc.
 590 Alden Road, Suite 211 Markham, Ont. L3R 8N2
 Tel. 905.752.6776 Fax. 905.752.6781
 www.forrestgroup.ca



CLIENT:
MAIN STREET CLOCK INC.

PROJECT:
**PROPOSED
 CLOCK TOWER REDEVELOPMENT
 NEWMARKET, ONTARIO**

DRAWING:
4th Floor

Designer:	Project number:	DRAWING NO: A5
Designer	6392	
Drawn by:	Date:	SCALE: 1 : 125
Author	JUNE 2015	
Checked by:	SCALE:	
Checker	1 : 125	